



# J4C INTERFACE KIT



## OUTER BOX IMAGES



## INNER BOX IMAGES



### PIECES:

- 1 J4C USB INTERFACE CABLE
- 2 SPARE CABLE

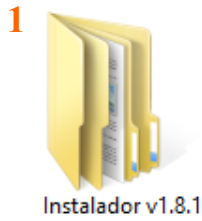


+612 9452 6556

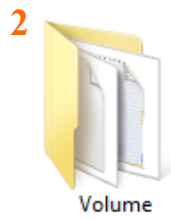
contact@jjactuatorsaus.com.au

www.jjactuatorsaus.com.au

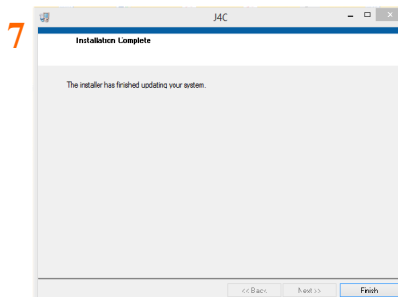
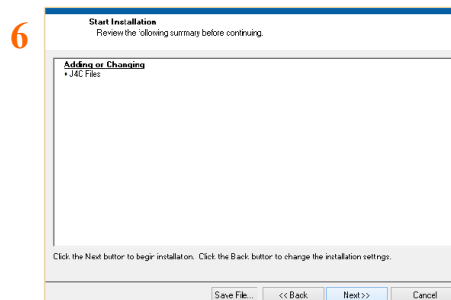
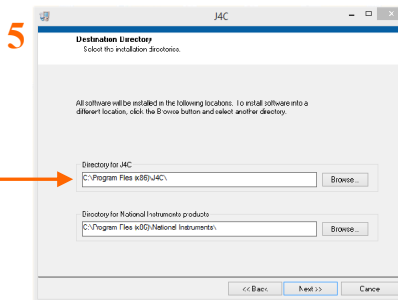
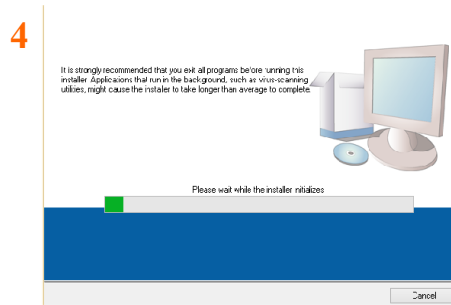
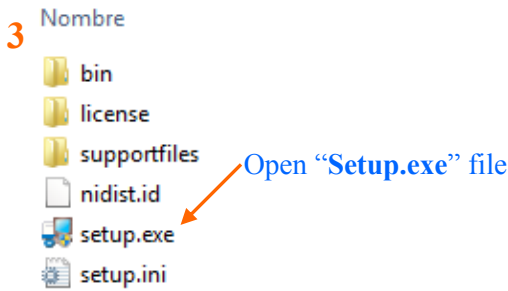
# SOFTWARE INSTALLATION



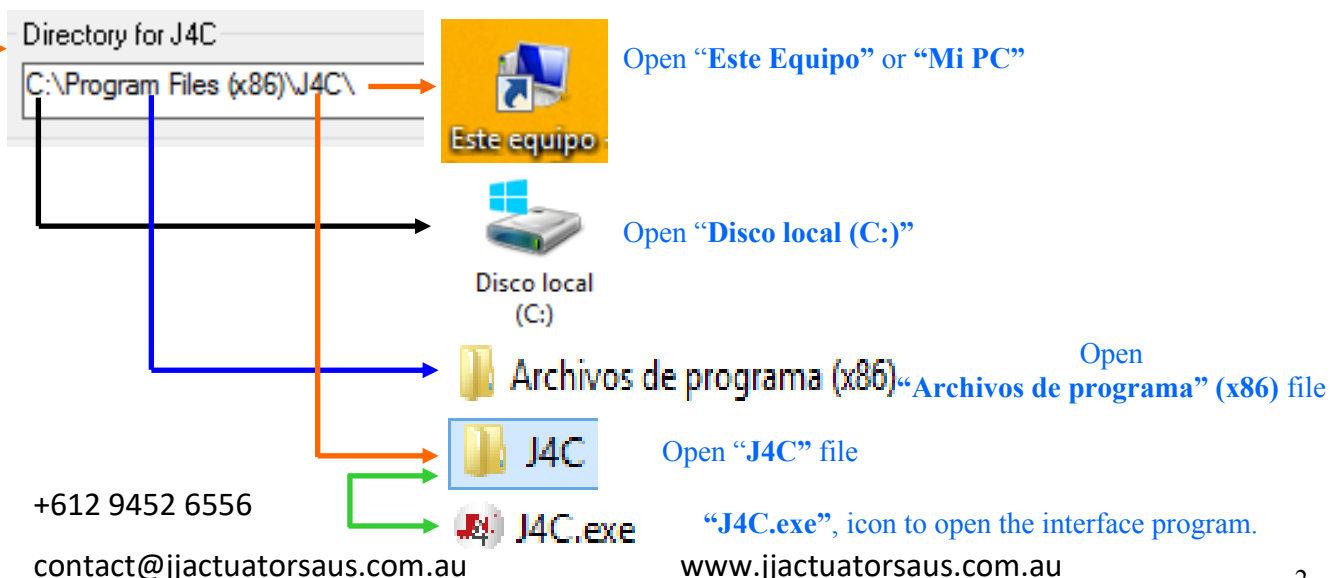
Open "Instalador" file



Open "Volume" file



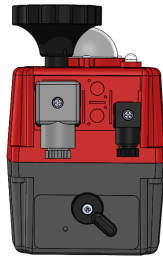
## SEARCH ICON TO ENTER IN THE PROGRAM



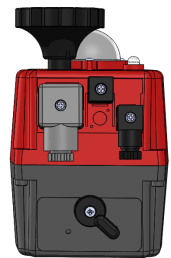
Actuators with inner Interface connection on PCB

Actuators with outer Interface connection on cover

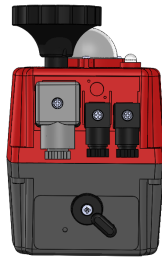
ON-OFF J4C 20 - 85



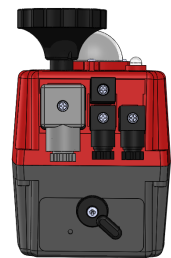
ON-OFF J4C 20 - 85



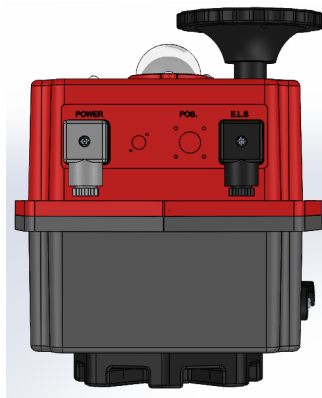
J4C 20 - 85 Positioner



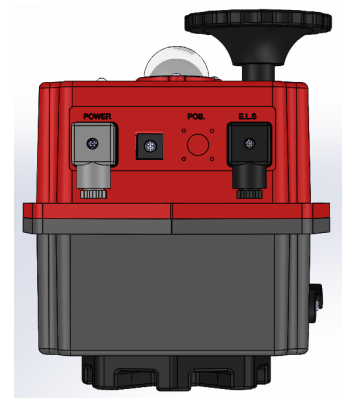
J4C 20 - 85 Positioner



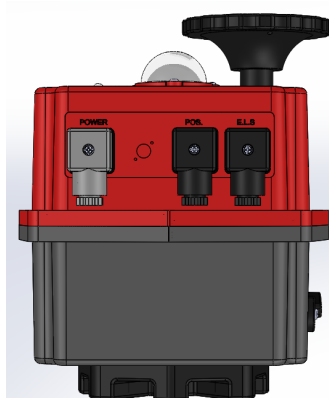
ON-OFF J4C 140 & 300



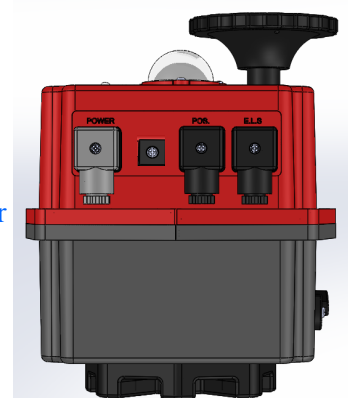
ON-OFF J4C 140 & 300



J4C 140 & 300 Positioner



J4C 140 & 300 Positioner



In case of having an actuator with inner connection on PCB, go to page 4.

In case of having an actuator with outer connection on the cover, go to page 5.

**J4C 20/85 - Take the cover off**



1. Remove the screw, which is fixing the hand wheel. (Fig.1)
2. Remove the 6 screws, which are fixing the body to the cover of the actuator (Fig.2).
3. Carefully lift the cover (Fig.3).
4. Connect the Interface cable, by following the next page steps.

**J4C 20/85 - Put the cover on**



5. Carefully mount the cover, minding the cables not to be pressed (Fig.4).
6. Fix the cover to the body by using the 6 screws (Fig.5).
7. Mount the hand wheel on the shaft and fix it by using the screw (Fig.6).

**J4C 140/300 - Take the cover off**



1. Remove the screw, which is fixing the hand wheel. (Fig.1)
2. Remove the 8 screws, which are fixing the body to the cover of the actuator (Fig.2).
3. Carefully lift the cover (Fig.3).
4. Connect the Interface cable, by following the next page steps.

**J4C 140/300 - Put the cover on**



5. Carefully mount the cover, minding the cables not to be pressed (Fig.4).
6. Fix the cover to the body by using the 8 screws (Fig.5).
7. Mount the hand wheel on the shaft and fix it by using the screw (Fig.6).

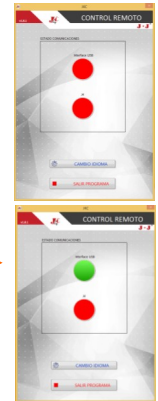
# INTERFACE PROGRAM

1

Open program by using icon "J4C.exe"



J4C.exe



2

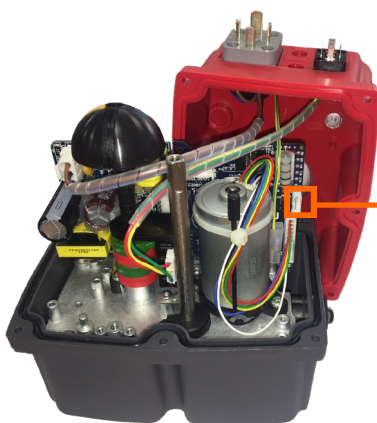
Connect the J4C USB interface cable to the PC



3

Connect the J4C USB interface cable to the actuator. (See Fig. 3.1 or 3.2)

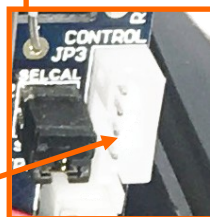
3.1 Actuators w/Interface Inner connection on PCB



J4C 20/85



J4C 140/300

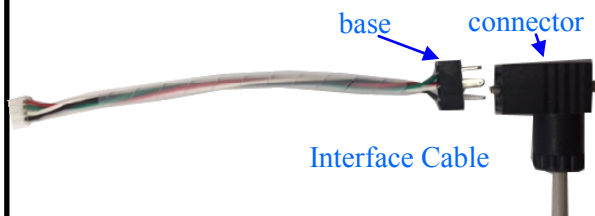
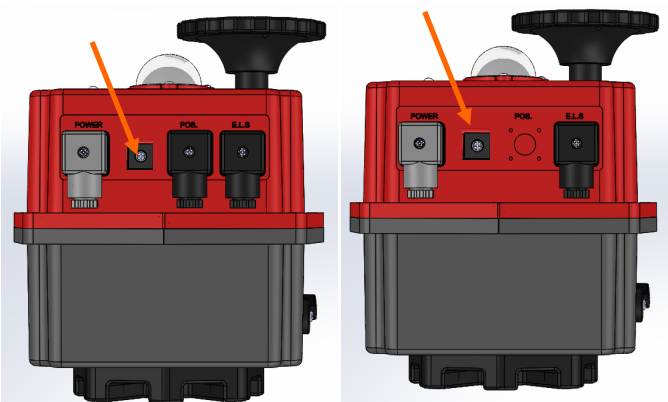
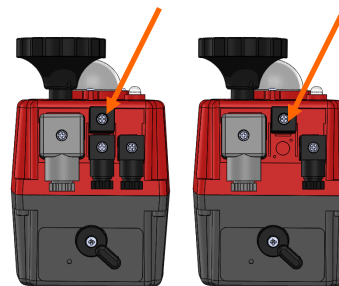


PCB Connector



Interface cable

3.2 Actuators w/Interface Outer connection on cover.



Interface Cable

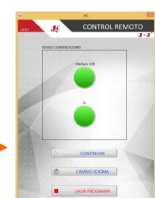
Separate the base from the connector .

Remove the cover, pointed with an orange arrow, and connect the connector of the Interface cable.

And connect the actuator to the power supply.

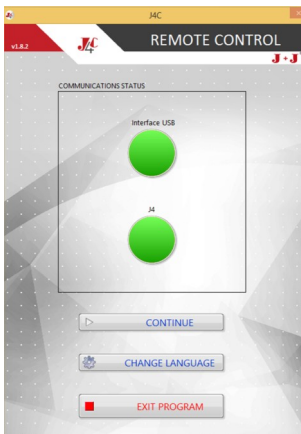
+612 9452 6556

contact@jjactuatorsaus.com.au



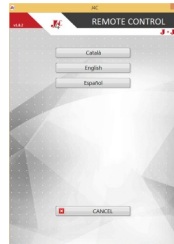
www.jjactuatorsaus.com.au

# INTERFACE PROGRAM



4 If desired language, please select **CONTINUE**

If change the language, please select **CHANGE LANGUAGE**



Select option:

**CATALÀ**

**ENGLISH**

**ESPAÑOL**

Select **CONTINUE**



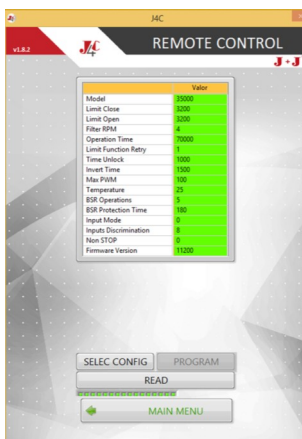
5 Select option **PARAMETERS**

6 Select option **COUNTERS**

7 Select option **DPS**

8 Select option **REMOTE CONTROL**

9 Select option **POWER SUPPLY CONFIGURATIONS**



5.1 Select option **READ**

	Value
Model	35000
Limit Close	3200
Limit Open	3200
Filter RPM	4
Operation Time	70000
Limit Function Retry	1
Time Unlock	1000
Invert Time	1500
Max PWM	100
Temperature	25
BSR Operations	5
BSR Protection Time	180
Input Mode	0
Inputs Discrimination	8
Non STOP	0
Firmware Version	11200

Model field:

20000 = B20 or S20 model

35000 = B35 or S35 model

55000 = B55 or S55 model

85000 = B85 or S85 model

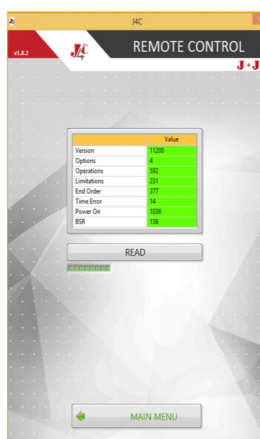
140000 = B140 or S140 model

300000 = B300 or S300 model

The rest of fields are related to the actuator functions.

The **SELEC CONFIG** option, it is only for the factory use.

To go back to the menu, select **MAIN MENU**



6.2 Select option **READ**

Version	11200
Options	0
Operations	5
Limitations	231
End Order	337
Time Error	34
Power On	1036
BSR	180

Version = Control software version.

Options = For factory use only.

Operations = Number of Operations.

Limitations = Quantity Limiter function activation.

End Order = For factory use only.

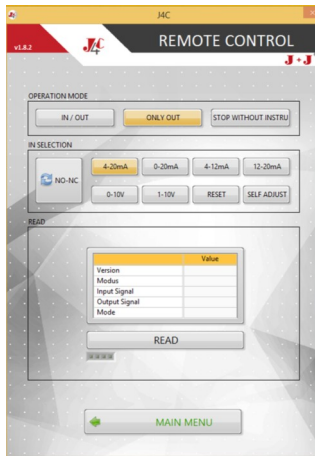
Time Error = Number of times the motor stops, due to the actuator in (MAN) position.

Power On = Number of times the actuator has been disconnected from the power supply.

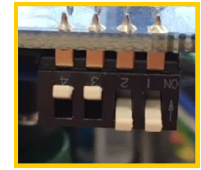
BSR = Working with BSR.

To go back to the menu, select **MAIN MENU**

# INTERFACE PROGRAM



**7.1** In order to set an actuator with positioner up, place the DIPS (on the DPS PCB), as per the image. Then go to



In case of not having the correct configuration, the program will inform how to place the DIPS. Place the DIPS as per the image.

To set-up the actuator by using the Interface kit, put the DIPS in the following way.



Select **MAIN MENU**  
 Select **DPS**

Select configuration: OPERATION MODE  
 Instrum signal in/out **IN/OUT**  
 ON-OFF Actuator only **OUT** **ONLY OUT**  
 (\*) The actuator stops when a lack of instrum signal. **STOP WITHOUT INSTRU**

(\*) Only for 4/20mA, 4/12mA, 12/20mA y 1/10V configurations.

Select a configuration: IN SELECTION

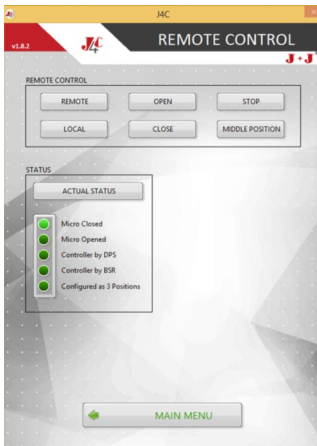
4/20mA   0/20mA   4/12mA   12/20mA  
 0/10V   1/10V

Select NO or NC option by using button

Select **SELF ADJUST**, the actuator will make a complete maneuver, recording máx. & min. positions.

Once the set-up is made, disconnect the voltage from the actuator, wait until the LED light extinguishes and connect voltage to the actuator. The actuator is ready to work.

# INTERFACE PROGRAM



8.1 To control the actuator from the PC, select option:

REMOTE

To control an ON-OFF actuator select:

OPEN  
CLOSE  
STOP

For three position actuators (0°-90°-180°, 0°-45°-90°, etc.) we have additional position:

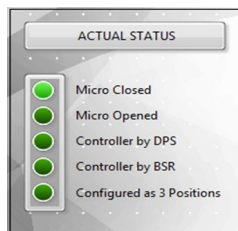
MIDDLE POSITION

To stop controlling the actuator from the PC, select option:

LOCAL

To see the actuator status, select option:

ACTUAL STATUS



When green light is on, it indicates:

Micro Closed = Closed Actuator

Micro Opened = Opened Actuator

Controlled by the DPS = Actuator with positioner

Controlled by the BSR = Actuator with BSR

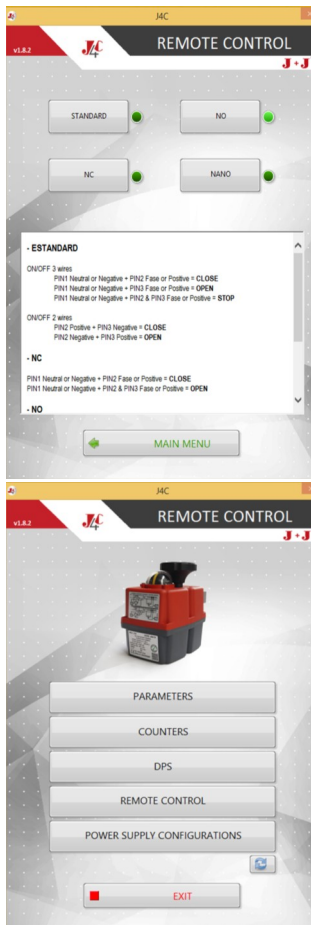
3 Position config. = 3 position actuator.

To go back to the menu, select:

MAIN MENU



# INTERFACE PROGRAM



**9.1** Select the electrical connection to work with:

- STANDARD
- NC
- NO
- NANO

The screen shows a short description of how the actuator works, with each of the 4 configurations.

Once the configuration has been selected, disconnect the voltage from the actuator, wait until the LED light extinguishes and connect voltage back to the actuator. The actuator is ready to work.

To go back to the main menu, select:

MAIN MENU

**10** To quit from the program, select: EXIT

Disconnect the voltage and the interface cable from the actuator.